



INSTALLATION MANUAL PALSTAT CAQ

Content

Basic information	3
Introduction.....	3
System specifications	3
Standalone installation on 1 PC.....	3
Network installation	3
Installation of Microsoft SQL Server 2005 Express	5
Installation of SQL server	5
Installation of Microsoft SQL Server Management Studio Express	7
Configuration and setup of SQL server	8
Create user	8
Create database	9
Installation of application PALSTAT CAQ 3G	11
Installation on server.....	11
Installation on workstation	11
Modification of configuration file of PALSTAT	11
Basic application test and error messages	12
Error messages	12
Connection error	12
Decryption error	13
Filling with default data.....	14
Filling via SDF and PRX file (recommended).....	14
Print report.....	14
Fieldlabels.....	15
Filling via SQL restore	17

Basic information

Introduction

This manual describe installation process PALSTAT CAQ on server and client. There is closely describe installation MSSQL 2005 Express and you can find system specifications for server and workstation.

System specifications

In this part you can find minimal system specification. Some values can be different, it depend on load the system and size MSSQL database.

You can download Microsoft SQL Server Express from official Microsoft pages:

<http://www.microsoft.com/en-us/server-cloud/products/sql-server-editions/sql-server-express.aspx>

Standalone installation on 1 PC

Program is installed and used only on 1 PC..

- Windows Vista, Windows 7, Windows 8
- Microsoft SQL Server Express 2005 or above
- Min. RAM 1GB, recommended 2GB
- 800 MB free disk space + space for data
- Min. 1GHz processor, recommended 2GHz
- Min. SVGA (1024x768) with recommended 16 - 32 bit deep
- Internet Explorer 7.0 SP1 or above
- Max. database size 4GB
- Microsoft .NET Framework 4.0

Network installation

Complete installation on network place. Data are installed on SQL server and programs are on shared network drive and are ran from network.

Server (32bit)

- Windows Server 2003 SP2 or above
- Microsoft SQL Server 2005 or above (Standard edition is recommended to avoid Express limitations)
- Min. 2 GB RAM, recommended 4 GB RAM or above, it depends on database size

- Min. 1 GB free disk space + space for data
- Min. 1GHz processor with 2 cores is recommended
- Min. SVGA (1024x768) with recommended 16 - 32 bit deep
- Internet Explorer 7.0 SP1 or above

Server (64bit)

- Windows Server 2003 SP2 or above
- Microsoft SQL Server 2005 or above (Standard edition is recommended to avoid Express limitations)
- Min. 4 GB RAM or above, it depends on database size
- Min. 1 GB free disk space + space for data
- Min. 1GHz processor with 2 cores is recommended
- Min. SVGA (1024x768) with recommended 16 - 32 bit deep
- Internet Explorer 7.0 SP1 or above

Workstation

- Windows 7 or above
- Min. 1GB RAM, recommended 2GB
- 500 MB free disk space
- Min. 1GHz processor, recommended 2GHz
- Min. SVGA (1024x768) with recommended 16 - 32 bit deep
- Internet Explorer 7.0 SP1 or above
- Microsoft .NET Framework 4.0

Network

- Protocol: TCP/IP
- Shared applications directory with programs (right only for READING is sufficient)
- Throughput data 100Mb, recommended 1Gb on server

Installation of Microsoft SQL Server 2005 Express

You can find here basic installation process include creating database for ran PALSTAT CAQ 3G. Our company advice you to make backup every day and keep them for 30 day minimal.

Installation of SQL server

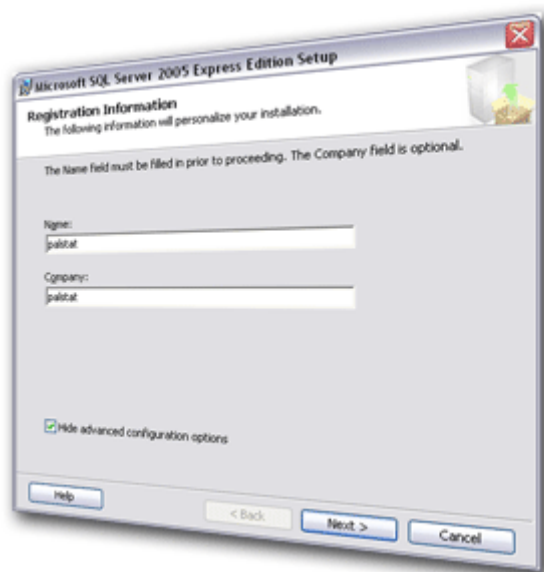
You can start with run SQLEXPRESS.EXE, which is part of installation pack.

Start installation process



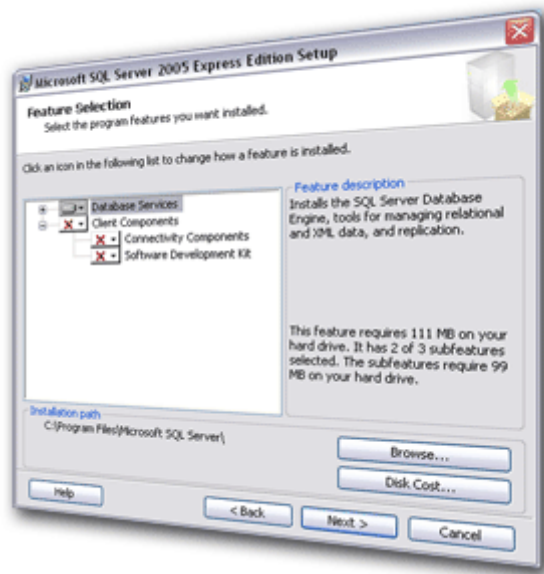
Before this screen are some other screen with license conditions.

Registration



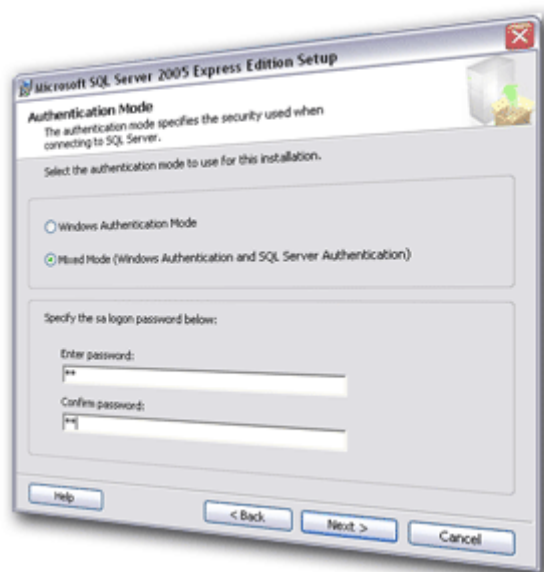
Registration informations are optional.

Destination



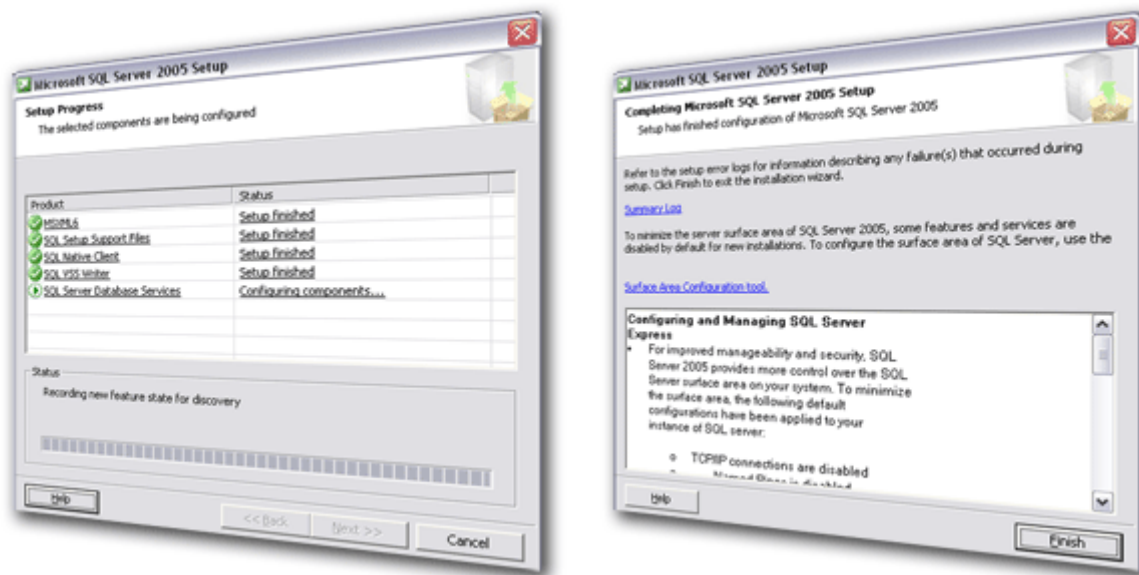
Select installation path.

Authentication mode



In this step you must select “Mixed mod” and insert password for “SA” user.

Running installation and finish



Installation of Microsoft SQL Server Management Studio Express

To be able manage SQL server is necessarily need install program for create users, database, planning backup and other.

Installation can be start SQLServer2005_SSMSEE.msi. For successful installation must computer contain.

- .NET Framework 2.0
- MSXML6

Installation is trivial and don't be described.

Configuration and setup of SQL server

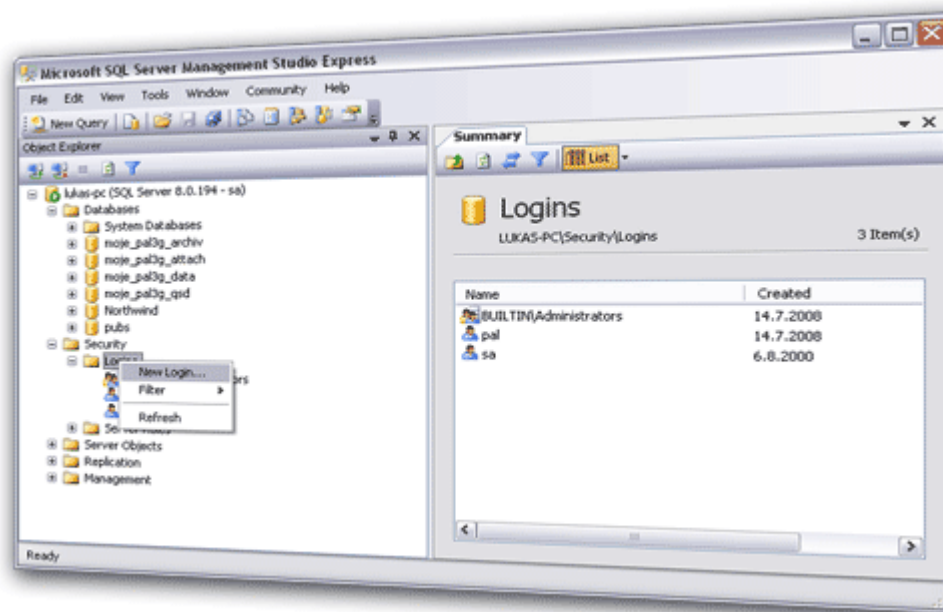
After successful installation SQL server and Management studio you can login for administration SQL server. Let fly Management studio with START => All program => Microsoft SQL Server 2005 => SQL Server management Studio Express.

After run the program you will be call for insert password. Insert user „sa“ and password which you insert during installation SQL serveru.



Create user

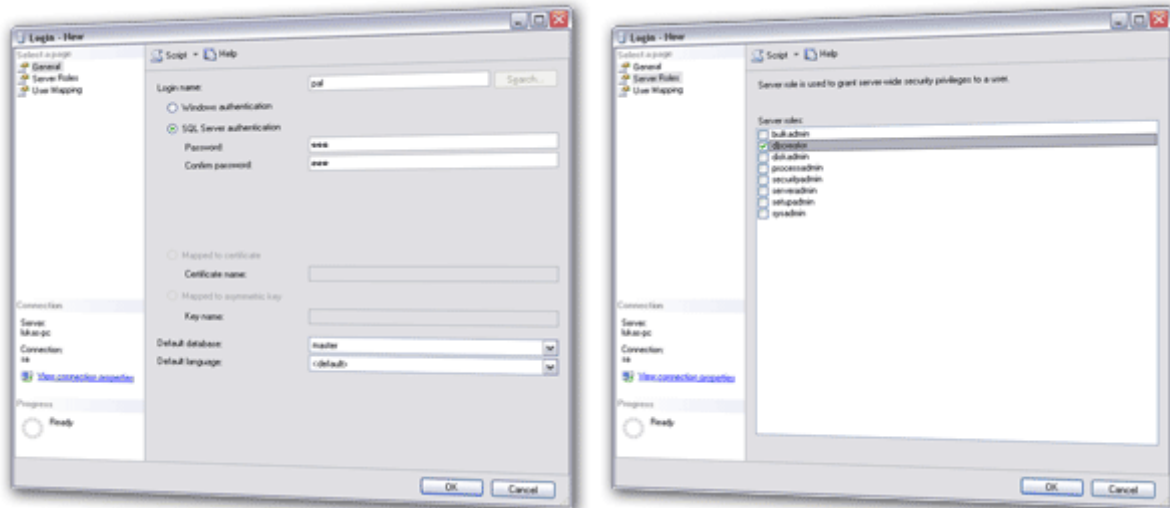
In this step you have to create user on MSSQL server, this user will be used for connecting the Palstat application to MSSQL server. Connection with „sa“ user is not excluded, but is not recommended.

Let open tree on left side of the program and click right mouse button. Select „New Login“ see picture.



On new window insert user „pal“ (then he have to be the owner of Palstat’s databases) and define password „SQL Server authentication“. On tool bar select „server roles“ and setup rights, minimal is DBCREATOR, see picture bellow.

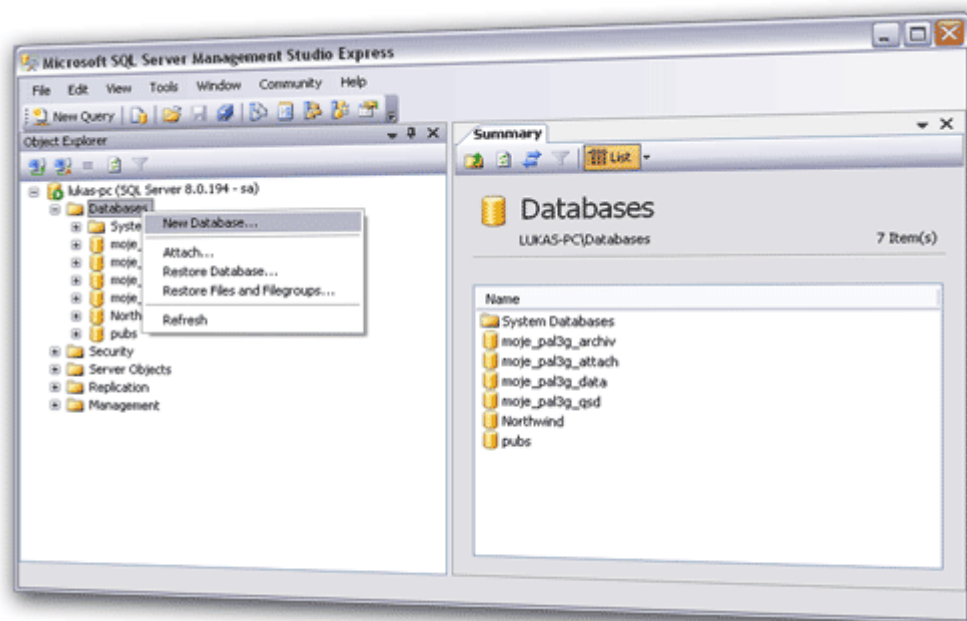
Now disconnect  from database and connect again  but with new user name and password „pal“ (doing this ensures, that „pal“ will be the owner of now newly created databases).



Create database

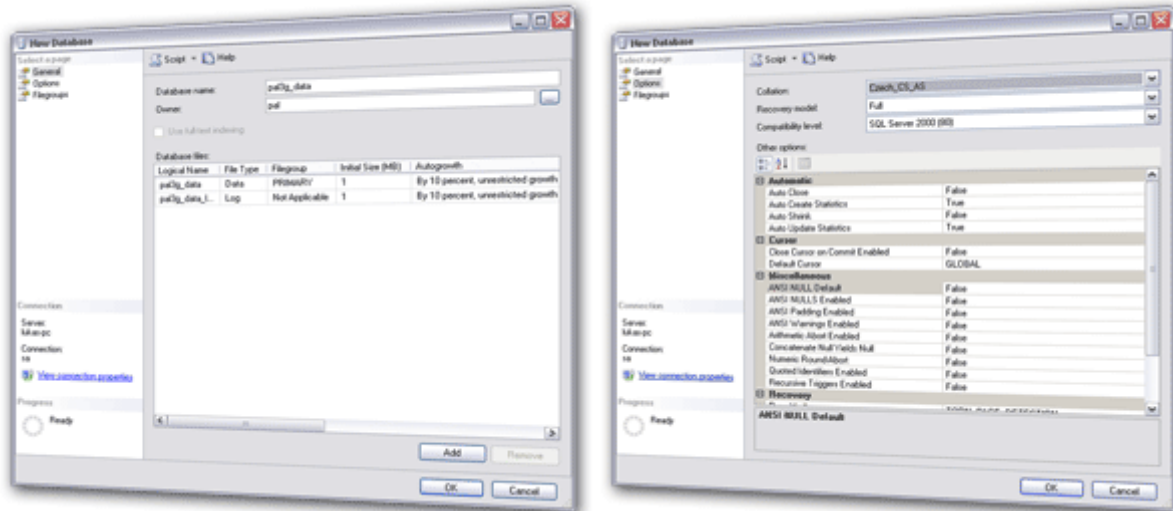
The user "pal" is currently created on the server yet and you are connect as this user. Now you have to established databases. Owner these databases must be user "pal"

Let open tree in left part the window (see picture bellow) and click right mouse button select „New Database“



In new window insert database name to field „Database name“ and into field „Owner“ insert owner „pal“. On this window you can also setup location for data files. Now select **„Options“** and for field **„Collation“** choose **„Czech_CS_AS“**

Other setup can stay default.



This procedure carry out for all databases bellow:

- pal3g_data
- pal3g_archiv
- pal3g_attach
- pal3g_qsd

After established each database you can see list on left part the program.

Installation of application PALSTAT CAQ 3G

When SQL server is ready and all databases are created properly, application can be installed on server. Make sure, that .NET Framework 4.0 is installed.

Installation on server

You got with this manual also applications probably as ZIP. These data decompress and copy to directory for example "Palstat CAQ".

- APL (applications)
- CONFIG (configuration + license)
- DOC (documentation)

Share directory "Palstat CAQ" on the server and setup rights for authorized persons. For testing purpose is recommended setup right on "everyone" READ. For final setup set right only for authorized person with READ right.

Program can be tested and run from server. Try run \APL\palstatcaq.exe

Default user is ADMIN and password is "" (blank)

Installation on workstation

After finish server installation and his configuration see bellow can be start workstation install. Before start installation palstat CAQ must be on the workstation installed programs from section „Installation application PALSTAT CAQ 3G.

Then only create shortcut on the workstation on application ./APL/PalstatCAQ.exe

Modification of configuration file of PALSTAT

Open file ./CONFIG/database.enc for edit and set it up as shows example bellow. Especially you must change values for „Data Source“ there you must insert server name or IP address (including instance name if exists!) of SQL server. Now change „user“ and „password“ as you set it on MSSQL.

```
<config>
  <connections>
    <connection id="CS02" name="DATA">
      <provider>mssql</provider>
      <string>Data Source=lukas-pc\sqlexpress;Initial Catalog=pal3g_data</string>
      <user>pal</user>
      <password>pal</password>
    </connection>
    <connection id="CS03" name="ARCHIVE">
      <provider>mssql</provider>
      <string>Data Source=lukas-pc\sqlexpress;Initial Catalog=pal3g_archiv</string>
      <user>pal</user>
      <password>pal</password>
    </connection>
    <connection id="CS04" name="QSD">
```

```
<provider>mssql</provider>
<string>Data Source=lukas-pc\sqlexpress;Initial Catalog=pal3g_qsd</string>
<user>pal</user>
<password>pal</password>
</connection>
<connection id="CS05" name="ATTACHMENTS">
  <provider>mssql</provider>
  <string>Data Source=lukas-pc\sqlexpress;Initial Catalog=pal3g_attach</string>
  <user>pal</user>
  <password>pal</password>
</connection>
</connections>
<databases actual="DB01">
  <database id="DB01" name="Palstat 3G">
    <default>CS02</default>
    <subdatabases>
      <subdb type="archiv">CS03</subdb>
      <subdb type="attachments">CS05</subdb>
      <subdb type="qsd">CS04</subdb>
    </subdatabases>
  </database>
</databases>
</config>
```

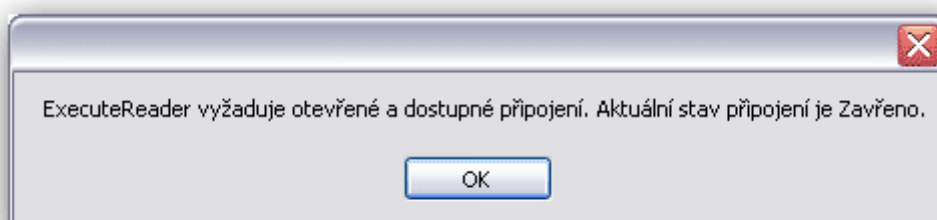
Basic application test and error messages

If all previous steps were made correctly, application can be launched. Execute `./APL/PalstatCAQ.exe`, login is ADMIN without password. Program starts with update, which creates tables in databases. After update is program ready.

Error messages

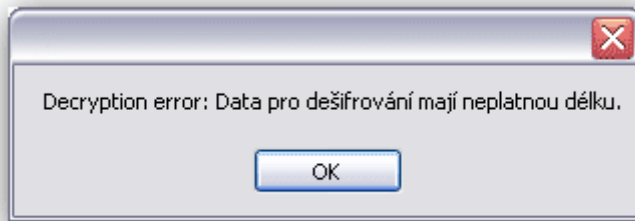
Connection error

Is called immediately after login. It is caused by error in `database.enc` or bad settings on SQL server for user PAL.



Decryption error

Is caused by bad key for decoding license file or connection file.



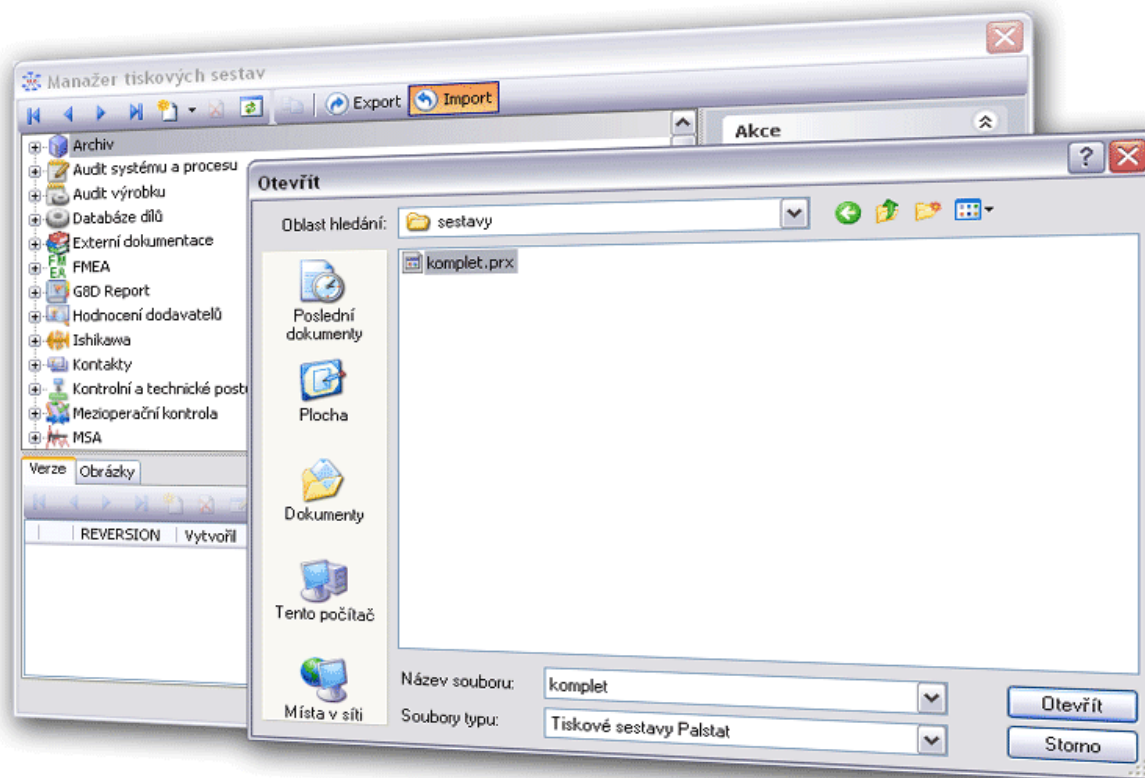
Filling with default data

If this is first use in your company and not upgrade from previous version, it is necessary to fill databases with default data like print reports, tables of keys and others.

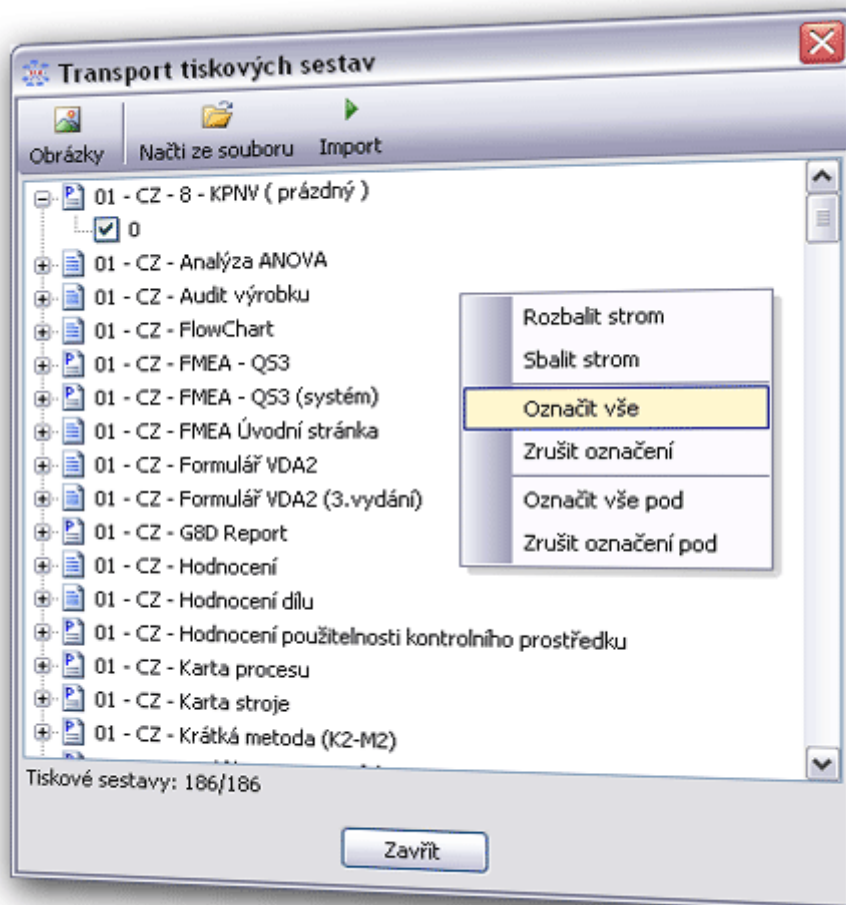
Filling via SDF and PRX file (recommended)

Print report

Open the PALSTAT CAQ with ./APL/ PalstatCAQ.exe where in the menu "Tools" select "Report Manager" In the program, select "Import" and open PRX file format that will be delivered simultaneously with the installation (sestavy.prx).



After selecting the file you need to choose what reports you want to import. Right-click anywhere in the reports list in the window that appears, select "Select All". Then click "Import" button to upload to system.

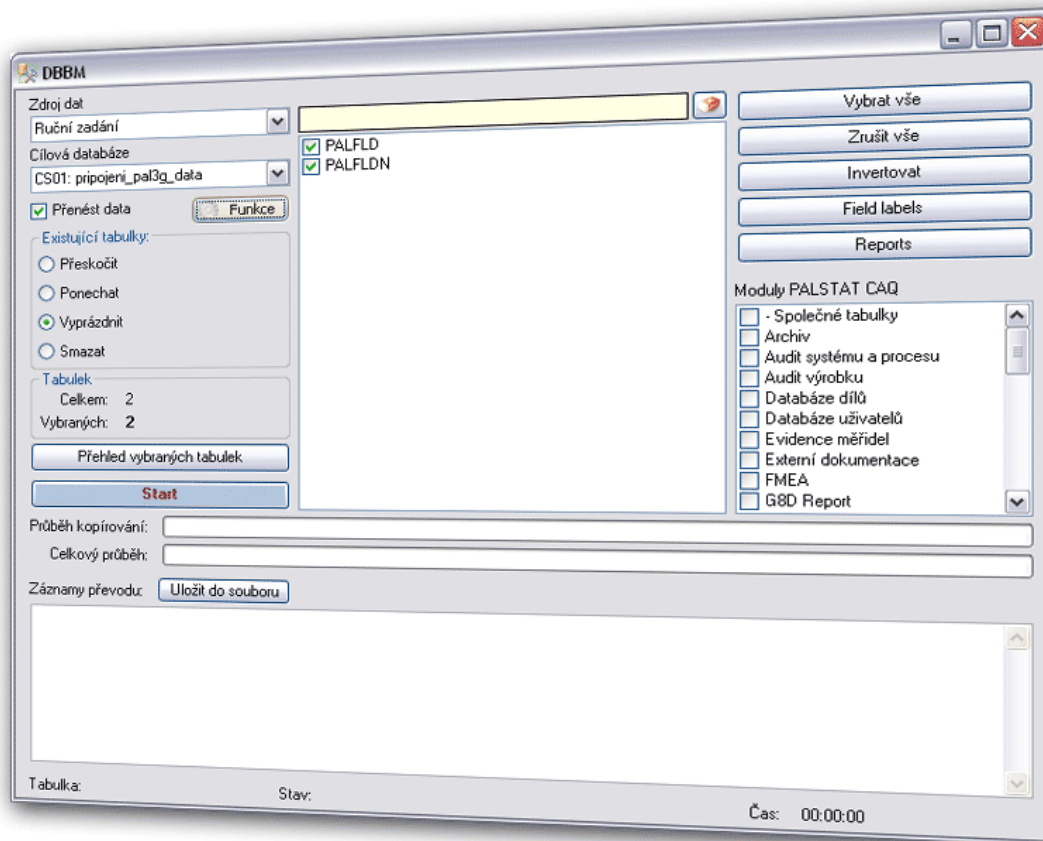
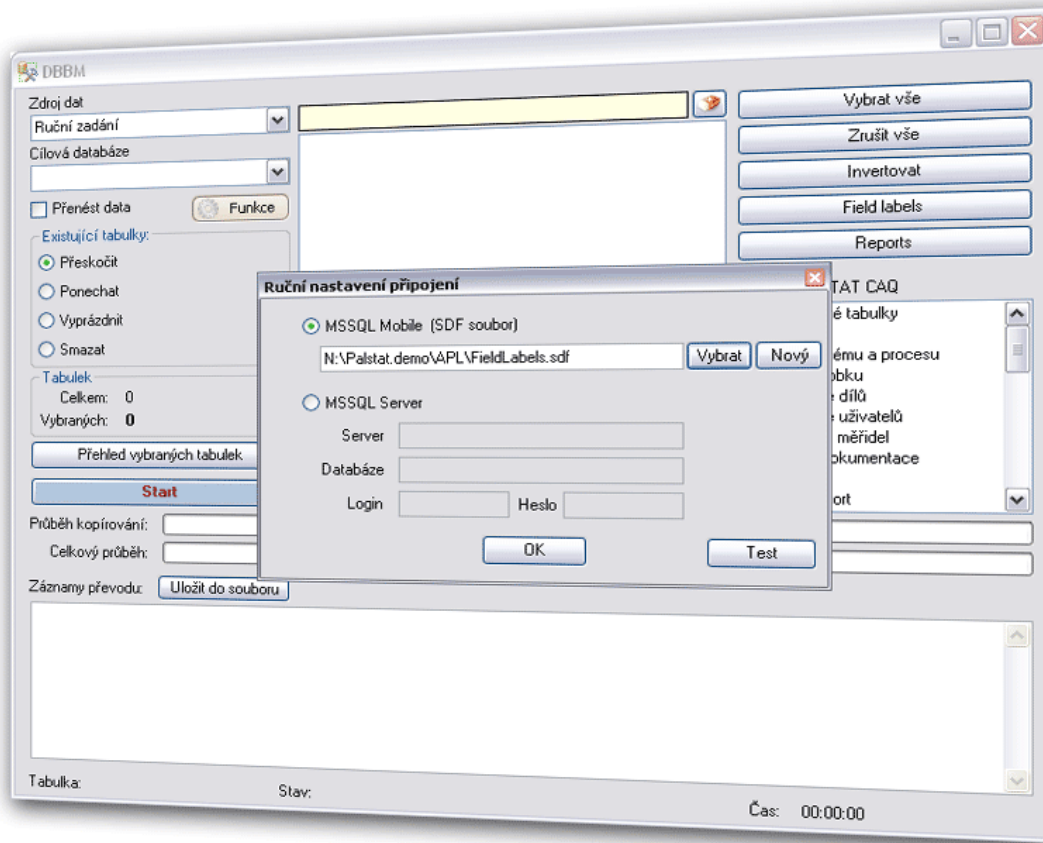


Fieldlabels

Let's run `./APL/Dbbm.exe` always use the username "ADMIN" and password "PalStaT123"

In the "Source" to select "Manual Entry" and open SDF file on your PC that you came (2-ca-fld.sdf). Press "Select" will load the file contents and therefore the table is displayed in the central part of the program. See the figure below.

On the left, select a target data database that contains the key data. Usually it is the database "pal3g_data".

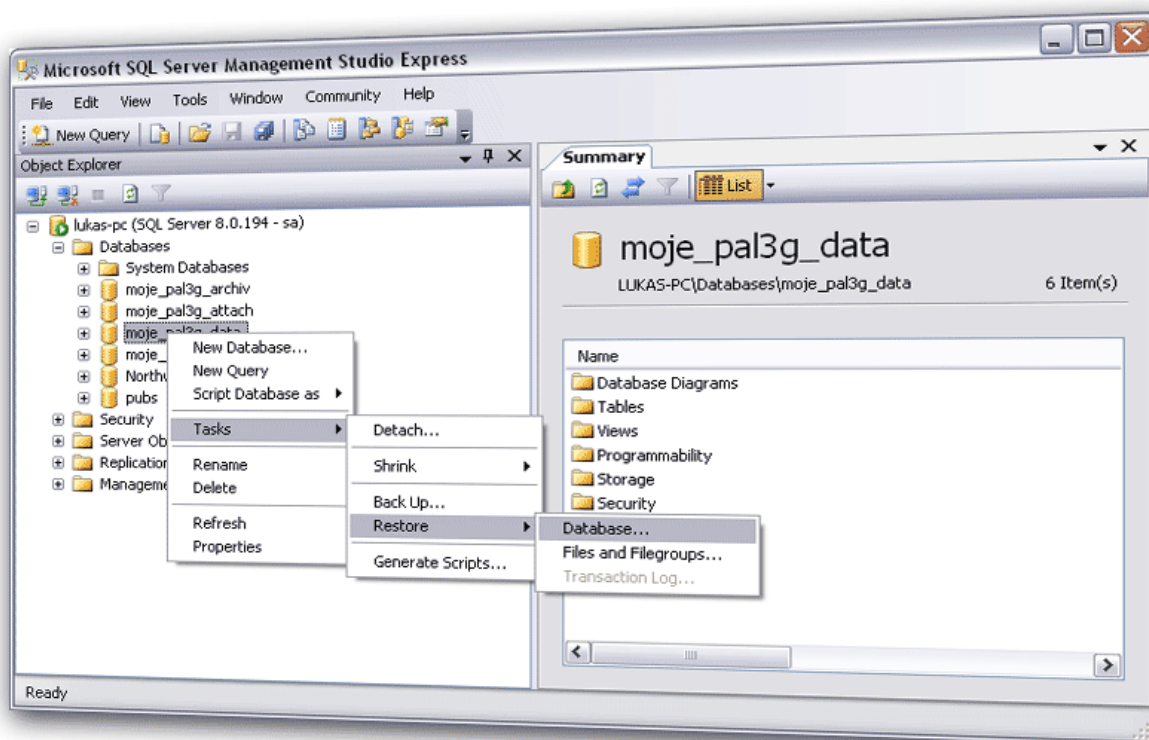


Filling via SQL restore

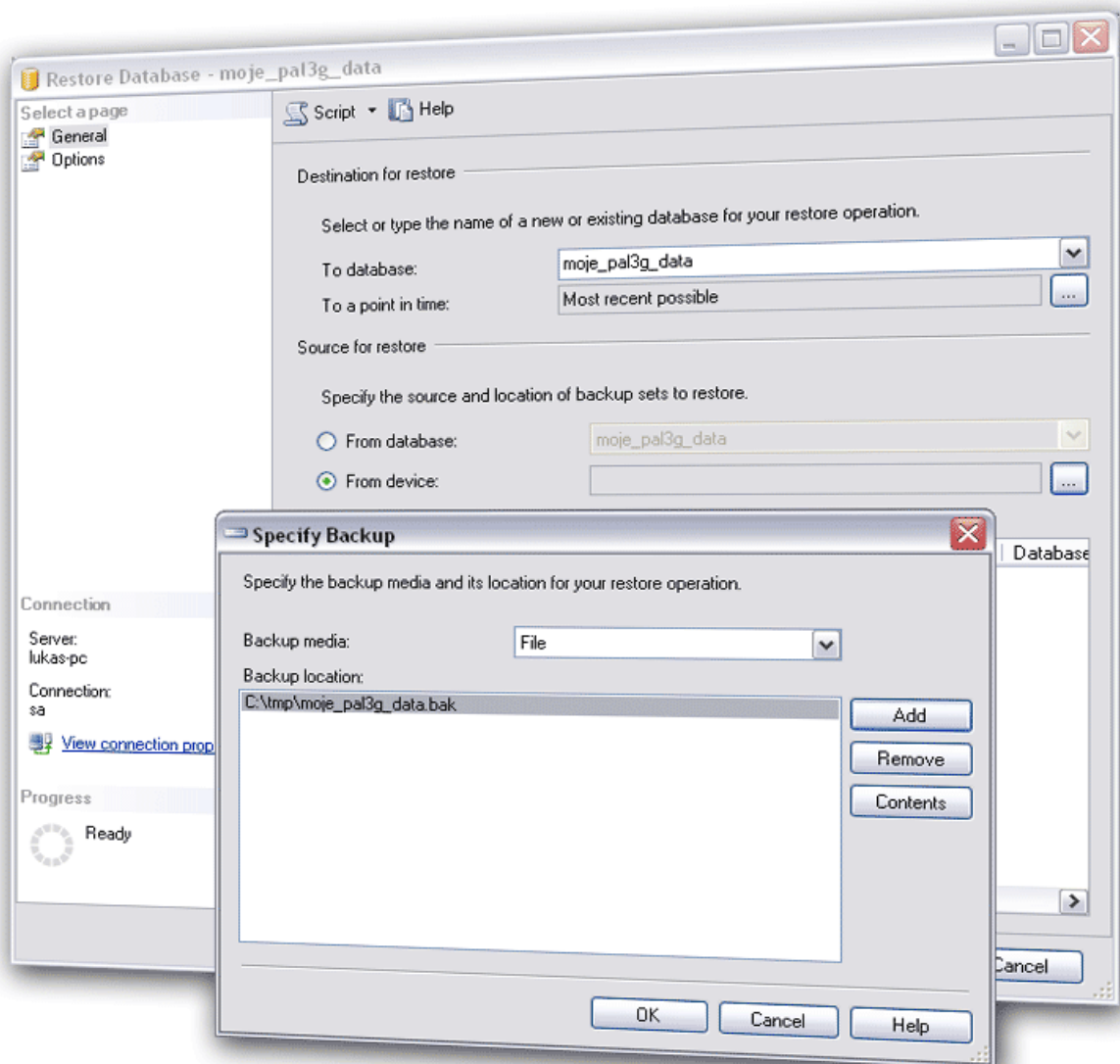
Is possible to fill databases via SQL restore, if you get with application these files:

- pal3g_data.bak
- pal3g_attach.bak
- pal3g_archiv.bak
- pal3g_qsd.bak

Run Microsoft SQL Server Management Studio, login like user PAL, to ensure that he will be the owner of restored databases, otherwise you will have to set this by running SQL script “`sp_changedbowner 'pal'`” over each of restored databases. Is possible, that user PAL doesn't have enough rights, in this case you must login like user SA first and increase PAL's permissions. Open “database” option like on screenshot.



Then select “From Device” and choose one from your .bak files.



Then select next page „Options“ and check „Overwrite the existing database“. Selected database will be overwritten, but is anyway empty.

